

V5 5" active / passive array



The Studiomaster V5 line array is a new development of a two way system providing superior performance with a flat frequency response and phase response in a range of 60Hz-20KHz. Ultra compact yet provides impressive power levels.

The V5 HF/MF system consists of a two 5" MF drivers combined with a 44mm HF compression driver. This tuned combination greatly reduces the cabinets weight and size, yet still produces high volume and SPL specifications.

The trapezoidal enclosure is designed to keep the loudspeakers operating the way they are intended with sound dispersion aimed towards the front.

The aluminium suspension system provides 0°- 10° of adjustment to achieve the ideal positioning. Connections to the V5 are through two NL4MP 4pin connectors. The cabinets are finished in a special elastic effect hard wearing paint, and are further protected with a tough grille.

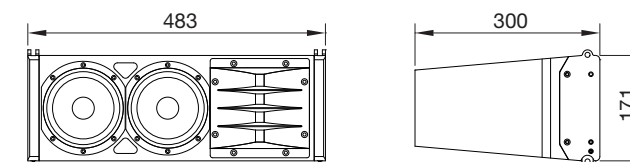
The matching V5S LF passive cabinet uses the same small footprint cabinet shape as the smaller V5 HF/MF unit. The V5S features two 10" high power LF drivers with 2.6" voice coils. The vented horn design further improves the already high efficiency.

If you choose the active sub bass the V5SA to drive your system, then you will benefit from all the features of the V5S, but also have your

sound amplified through the built in linear amplifier with DSP audio processing, to perfectly match your signal to the cabinets.

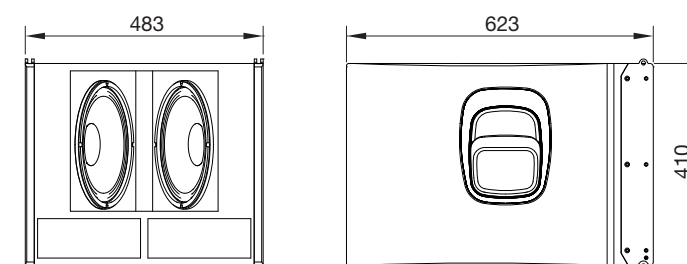
The power amp module boasts variable speed fan cooling, overload and short circuit protection. Thermal protection is intelligent and linked to the DSP. If temperatures rise out of the set limit, the DSP will attenuate the output from the amplifier, and if required for protection shut down the amplifier to ensure future reliability.

Status LEDs to show overload and peak situations are easily visible from the rear panel.



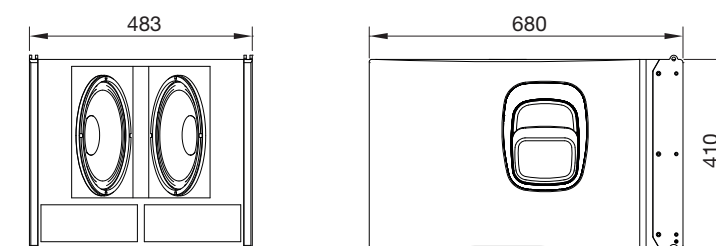
V5 2x5" PASSIVE HF/MF LINE ARRAY ENCLOSURE

- Superior quality 2 x 5" HF/MF drivers
- 44mm compression driver
- Ultra compact with durable finish
- Fully adjustable aluminium suspension system available.



V5S 2x10" PASSIVE LF LINE ARRAY ENCLOSURE

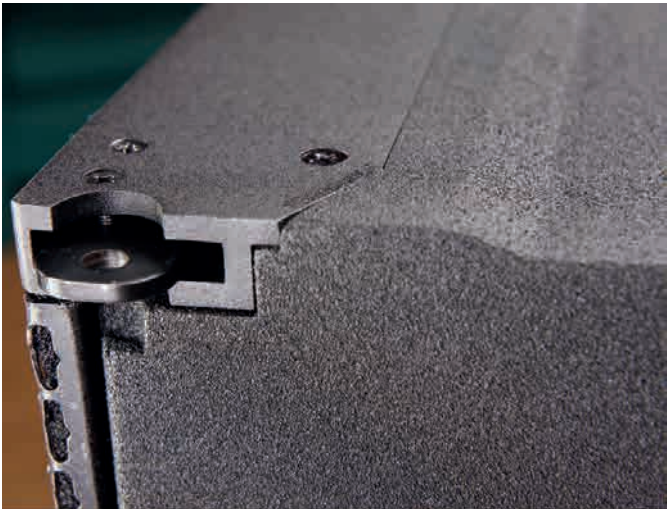
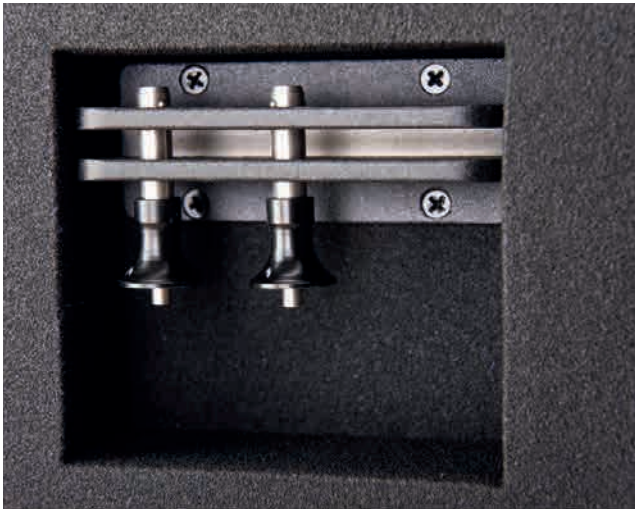
- 2 x 10" LF drivers using vented horn design to improve efficiency
- Large 2.6" voice coils to deliver consistent high power
- Ultra compact with durable finish
- Adjustable suspension system and convenient scoop handles



V5SA 2x10" ACTIVE LF LINE ARRAY ENCLOSURE

- 2 x 10" LF drivers using vented horn design to improve efficiency
- High power amplifier built in with intelligent protection
- DSP audio processing built in to perfectly match your sound
- Designed to be compatible with V5 passive HF/MF enclosure





	V5	V5S	V5SA
MAX SPL	LF 116dB / HF 127dB	130dB	130dB
PEAK	LF 400W / HF 200W	1000W	POWER 750W+750W
PGM	LF 200W / HF 100W	500W	-
RMS	LF 100W / HF 50W	250W	-
WEIGHT	11kg	31kg	33kg
Cabinet type	2-way passive line array	passive line array woofer	active line array woofer
Frequency response	60Hz - 20kHz (-10dB) 80Hz - 18kHz (+/-3dB)	50Hz - 350Hz (-10dB) 55Hz - 300Hz (+/-3dB)	50Hz - 350Hz (-10dB) 55Hz - 300Hz (+/-3dB)
Sensitivity 1w@1m	LF 90dB / HF 104dB	97dB	0dBu
Coverage (h x v)	90 degree x angle dependent	-	-
LF Driver	2 x 5" / 25mm VC	2 x 10" / 65mm VC	2 x 10" / 65mm VC
HF Driver	1 x 1.75" / 44mm VC	-	-
Impedance	LF 16 ohm / HF 16 ohm	4 ohm	LF AMP + 4x 4ohm output for MF/HF
Crossover frequency	80Hz / 1.7kHz	80Hz	80Hz
Vertical spread angle	0-10 degree (2 degree step)	-	-
Dimensions (wxhxd)	483 x 171 x 351mm	483 x 410 x 623mm	483 x 410 x 680mm

SUGGESTED SETUP CONFIGURATIONS



setup configuration 1

8 x V5 passive MF/HF cabinets
2 x V5S passive LF cabinets

1 x AC36II 3 in 6 out speaker processor



1x HX2-700 2x350w power amplifier for HF



1x QX2-2000 2x1000w power amplifier for MF



1x QX2-2000 2x1000w power amplifier for LF



setup configuration 2

8 x V5 passive MF/HF cabinets
2 x V5SA active LF cabinets

2 x suspension cradle